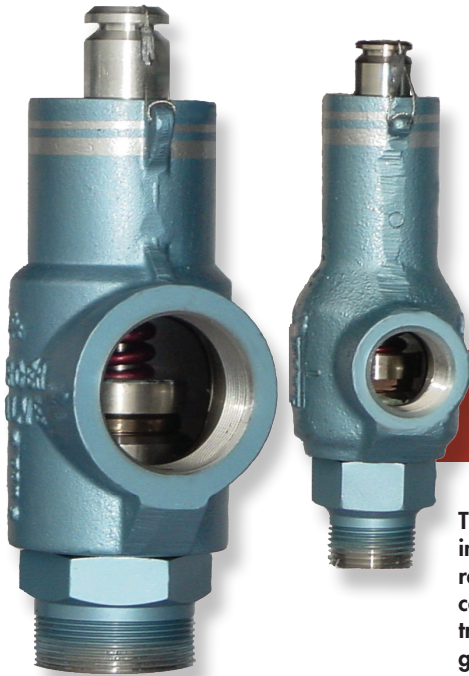


Mercer Valve Canada Safety Relief Valves meet the absolute Toughest Standards in most industrial applications. Far superior to traditional relief valve designs, Mercer valves open, close, seat and seal!

Mercer Valves are Lightweight, Compact, and extremely reliable. Our valves use the Auto Seat Technology® Soft-Seat design. This patented design allows our valves to relieve pressure ("pop") virtually hundreds of times and remain "Bubble Tight". Mercer Valve's full line of Threaded, Flanged, and Pilot Operated products are up to the challenge of rough handling and Severe Service Applications.

Be it Threaded or Flanged Valves, Springs, Repair Kits, or Pilot Parts, Mercer Valve Canada . and their support team of Professionals are there to provide everything you need to get your Critical Systems back on-line and operating to their maximum potential.



8100 Series

This Valve is well suited for all industrial air, gas, and liquid relief applications, including compressors, separators, transmission and gathering lines, gas production units, heater treaters, scrubbers, and other production processes. Available in "E" and "G" orifice only.



9100 Series Flanged

A perfect Valve for all industrial air, gas, or liquid relief applications, including compressors, separators, heater treaters, scrubbers, dehydrator, free water knockouts, thermal relief, gas production units, transmission and gathering lines, meter runs, gas plants, chemical plants and other industrial applications. Available in "C" to "M" orifice and 1/2" X 1" to 4" X 6".



8500 Series

The 8500 Series offers high capacity to all industrial air and gas relief applications, including compressors, separators, transmission and gathering lines, gas production units, heater treaters, scrubbers, and other production processes. Available in high capacity "E" orifice only.



9500 Series Modulated Pilot

For protecting air, gas and liquid applications including; pipelines, pumps, compressors and vessels. Mercer's 9500 Series is a complete valve line with API orifice sizes from D through T and Full Bore Orifices form 1 1/2" to 8". Inlet and outlet sizes are available from 1" x 2" up to dual outlet 8" x 10" x 10" valves. The Mercer pilot operated relief valves feature a true modulating design, reducing product loss.

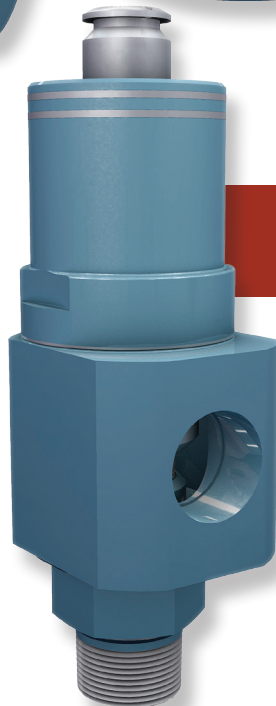
9500 Series Snap Pilot

Ideal for protecting air and gas pipelines, compressors, and vessels, an industrial service valve. A complete valve line with API orifice sizes from D through T and Full Bore Orifices form 1 1/2" to 8". Inlet and outlet sizes are available from 1" x 2" up to dual outlet 8" x 10" x 10" valves. The Mercer pilot operated relief valves feature a low blowdown, reducing product loss.



9100 Series Model 20

The 9100 Mod 20 has a field proven soft seat coupled with a new, unique guided disk type Patented Design. Expected seat life with Auto Seat Technology® is hundreds of "pops". Full length guiding of "low rate" set pressure springs insures accurate, repeatable relief action. Used in services above 3,000 psi for liquid air or gas in Thread or Flange design.



9100 Series Threaded

The right choice for all industrial air, gas, or liquid relief applications, including compressors, separators, heater treaters, scrubbers, dehydrator, free water knockouts, thermal relief, gas production units, transmission and gathering lines, meter runs, gas plants, chemical plants and other industrial applications.



Why do thousands of customers choose Mercer Valves over the competition, every time?

- CRN Registered in all Canadian Provinces & Territories OG8841-5CR1
- Advanced Engineering Design High Flow Rates
- Extended Seat Life
- Proven Lower Cost of Ownership
- Accurate Settings
- Difficult Application Solutions
- Carbon Steel, Stainless Steel and Exotic Body Materials are available
- Soft-Seat Materials to meet the Toughest Requirements
- All models built to ASME Sect VIII, Div 1 Code requirements
- Bubble Tight (Reducing Fugitive Emissions)
- 100% American Manufactured



Western Gauge
Mercer Valve
Superlok
CheckPoint Pump
Warren Valve

CONTACT US TODAY

EMAIL: customercare@unifiedvalve.com